

# The Palette

## Newsletter of the McLean Art Society

November/December 2021

### from the co-president

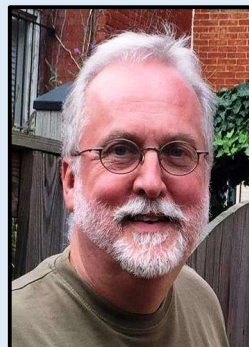
In less than a month MAS will host our first large scale show and sale since the fall of 2019. **"The Eye of the Beholder"** will showcase the work of over 20 MAS artists over three days: November 12, 13, 14. The entry deadline is fast approaching, October 23. All MAS members received entry information from Lori Lisiecki and there is still a little time to enter. The show will be judged by Allen Bentley and show winners will be announced at the opening reception Friday evening, November 12, from 5 to 8 pm. Mr. Bentley, professor of drawing and life drawing at Montgomery College, will speak about his selections. Masks and sign-in will be required as per covid 19 protocols. This will be a wonderful opportunity to come out and support your fellow MAS artists and learn from an experienced area teacher. Bring your friends. Walker Chapel Church is conveniently located on Glebe Road, has ample parking, and is handicap accessible. The show will be up Saturday, 10-4, and Sunday, 10-1. Huge applause to Lori Lisiecki for working to organize this event and thanks to Anna Katalina for the publicity artwork. Our October and November meetings will be by Zoom invitation. See page two for artist information. Photos and information on Artfest 2021 are on page 3.

Cheers!

*Ray Goodrow*

"Creativity is allowing oneself to make mistakes. Art is knowing which ones to keep."

Scott Adams, The Dilbert Principle

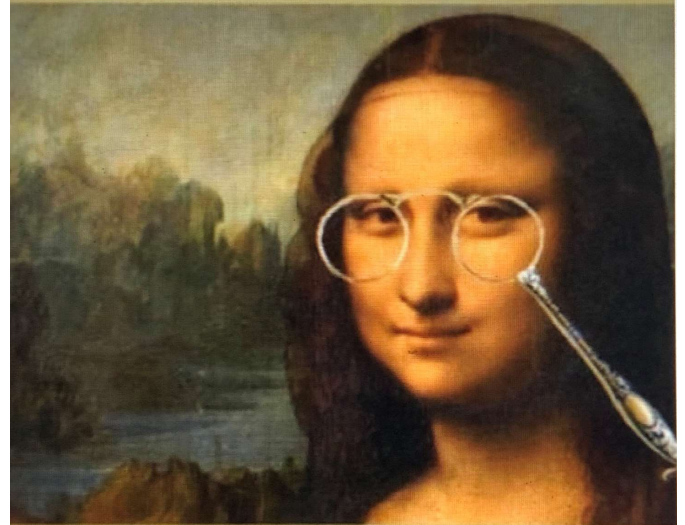


### Calendar (for specifics, see emails)

- October 22 Membership Mtg & Artist Presentation, Ally Morgan, Zoom, 10am, [allyglowackiart.com](http://allyglowackiart.com)
- November 2 Show Change @ Spring Hill, 11am
- November 12, 13, 14 Juried Show
- November 19 Membership Mtg & Artist Presentation, Naomi Chung 10am, [www.naomichung.net](http://www.naomichung.net)

### Art Show and Sale

By McLean Art Society



Walker Chapel United Methodist Church  
4102 N.Glebe Rd, Arlington, VA

Friday, Nov. 12 — 5 to 8 P.M.  
Saturday, Nov. 13 — 10 A.M. to 4 P.M.  
Sunday, Nov. 14 — 10 A.M. to 1 P.M.

Show Entry Deadline: October 23--Contact Lori Lisiecki for details

## October 22 Program Artist - Ally Morgan (ZOOM)

Ally Morgan is a visual artist and art teacher working in Montgomery County, Maryland. In 2010 she received her BFA in painting from Salisbury University and she received her MFA in drawing and painting from Arizona State University in 2014.

Ally is a mixed media artist, focusing on watercolors, pens, and colored pencils. Inspired by the lectures of the French philosopher Jacques Derrida, she endeavors to explore the identity of the “Animal Other” as well as her own personal relationship with them. Derrida suggested that “the animal looks at us and we are naked before it... thinking perhaps starts here.” This statement about seeing the animal and the animal confronting our gaze of them has continued to lead Ally’s artistic investigation. [www.allyglowackiart.com](http://www.allyglowackiart.com)

## November 19 Program Artist – Naomi Chung (ZOOM)

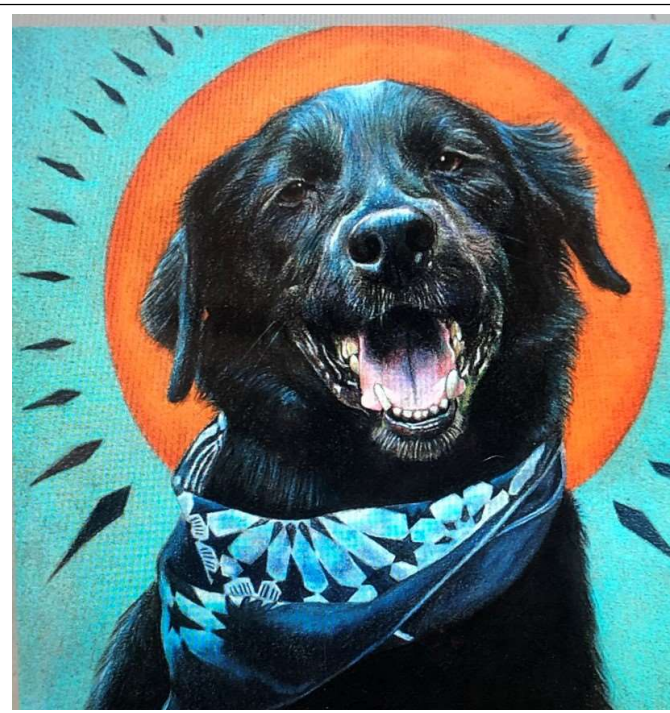
Naomi Chung is a painter and art educator who teaches drawing, painting, color theory, and design classes at Marymount University, Montgomery College, and the Mclean Project for the Arts. She is a semi-abstract painter using Nature as a primary source of inspiration and is represented by Gross McCleaf Gallery in Philadelphia, PA and Warm Springs Gallery in Warm Springs, VA. Her works are part of many private and public collections and institutions nationwide including Merck, Honeywell, and University Medical Center of Princeton. Examples of her work can be seen at [www.naomichung.net](http://www.naomichung.net)

### McLean Art Society, Inc. 2019-2020

Co-Presidents	Ray Goodrow, Anna Katalkina
Vice President	Sandra Hill
Co-Secretaries	Margie Bell, Vicki Doyle
Treasurer	Judy Landry
Facebook Coordinator	Anna Katalkina
Committee Chairpersons	
Directory	Hanna Emrich, Lori Lisiecki
Hospitality	Hanna Emrich
Membership	Lori Lisiecki
Name Tags	Diane Moran
Newsletter	Ray Goodrow
Parliamentarian	Mary Jeanne Martz
Patron’s List	Charlotte Potashnik
Program Coordinator	Dorothy Hassan
Publicity	Renee Alberts
State Agent	Ginger Sanaie
Venues	
Chesterbrook Residences	Margaret Raymond
Westover Library	Bill and Betty Dunn
Dolley Madison Library	Olga Martin
MPA/TD Bank	Hanna Emrich, Vicky Wilken
Mylo’s	Carol Waite, Elena Strunk
Spring Hill	Carol Higgs, Carol Milton
Wok n Roll	Ginger Sanaie
Volunteer Coordinator	Jane Coonce
Web Master	Kevin Coonce
Webmaster Liaison	Charlotte Potashnik
At-Large Members	Ginnie Luster, Vicky Wilken

## News and Notes

Welcome new members Dipali Rabadiya and Mary Ann Nirschl.



Artwork by Ally Morgan.



Above: Tony Neville, Ginger Sanaie, Judy Landry, Jane Coonce, Ray Goodrow, Christy Kill Right: Lori Lisiecki



## McLean Project for the Arts Artfest 2021.

A beautiful, sunny day at McLean Central Park. McLean Project for the Arts reported over 10,000 people attended the day-long event. Over \$4,000 in sales for 12 MAS artists.



Above: Christy Kill at the MAS tent. 19 artists participated with over 65 paintings hanging. Below: Gerda Lane (seated) at the sales table.

