



McLean Art Society

Palette

February 2022

From the president

Days are slowly getting shorter and warmer, and I hope that this will inspire us to paint! Especially since we have new exhibition opportunities!

The first meeting of the year took place at the end of January, Christy Kill was voted in as the new Secretary until she leaves the area in the summer. Thank you, Christy!

In the second half of the meeting, artist and educator Allen Bentley gave a presentation of his past work. Members were impressed with his energy and talent.

We are happy to report that a new venue is being in the works to be made available to our members: Oak Marr Recreation Center in Oakton. The space is similar in concept to the Spring Hill Recreation Center, but has more walls, including the one in the main lobby. Betty Ganley lead the initial arrangements; Margaret Raymond is the curator-coordinator. Margaret will send out further information when details are worked out with the venue. We anticipate that artists will be able to hang two pictures on days different from the Spring Hill hanging not to interfere with the SH schedule.

Olga Martin has secured the opportunity to display small works at the Dolley Madison Library cabinet for the month of May. Please start thinking who would like to participate. The details will be forthcoming.

Our next meeting will take place on zoom on February 25. General meeting will start at 10am, followed by the artist's presentation at 11am. Artist Ann Wallace will demonstrate her pastel painting techniques. The zoom link will be sent to the membership two days before the meeting.

See you on the 25th,

Anna

Anna Katalina
President MAS



News & Notes

McLean Art Society

Meets every 4th Friday of the month.

Next meetings:

February 25: General Membership Zoom
with **Ann Wallace** as our guest Artist
demonstrating her pastel painting techniques

March 25: General Membership Zoom
with **Elizabeth Vismans**, artist, certified NLP
practitioner, and life purpose coach to discuss
painting and intuition

April 25: General Membership in-person at MCC
with **Anna Katalina** demonstrating her unique
multi layer painting technique



Spring Hill

One of our favorite places with easy access.
See Carol Higgs' email 1/24 on steps to follow.

January 25, 2022 to March 8, 2022

March 8, 2022 to April 19, 2022

April 19, 2022 to May 24, 2022

Dolley Madison Library

A special opportunity during the month of May for
display and sale of small footprint artwork in a sealed
glass case. See inside this newsletter for more details.

Oak Marr Recreation Center in Oakton

A new opportunity similar to Spring Hill coming
soon...watch for details.

Time to Do It!



McClean Art Society - February 2022

Luda Del Rose

February 13, 1939 ~ 2022



We will miss Luda a lot. May her soul rest in peace and God give strength to her grieving family.

She was a special person and will be missed

What a lovely lady. We had such fun at the McClean art festival over the years. I especially remember how helpful she was.

Luda gave so much to the Society: lots of support and encouragement to members, and tireless help and long hours at events.

She will be sorely missed!



Setting down her earthly brushes
to now paint the heavens



McLean Art Society - February 2022

McLean Art Society Artist of the Month

GERDA LANE

By Palette Editorial Staff

Our fellow member and fine artist **Gerda Lane** began pursuing her interest in art in 2014 after raising a family and retiring from a career in the US Department of State. She paints in oil, watercolor, and pastel. She has a degree in fine arts and continues to take classes and workshops in northern Virginia to further develop her skills. Gerda primarily paints landscapes and still life scenes, and also enjoys creating whimsical nursery scenes. Her style can be described as impressionistic, choosing colors from a soft French-inspired palette. She is a member of the Arlington Artists Alliance, Program Chair of the McLean Art Society, and the Falls Church Art Society, and enjoys belonging to these communities of fellow artists.



Wine with Pears
Oil on Canvas
12" x 12"



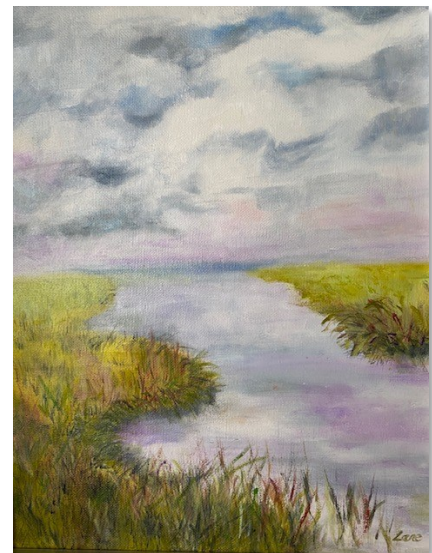
Lavender in Provence



To Gerda!



Pears ~ watercolor 11" x 14"



Delaware Marsh



McLean Art Society - February 2022

ALLEN BENTLEY

By Palette Editorial Staff

A wonderful benefit of membership in the Society is the Artist presentation following the general meeting program each month. You can look at paintings forever, analyze brush strokes, talk about luminosity and animation, but you still don't know the artist! But spend an hour with them, get inside their head, look at the world and art as they see it, and you have a memory to guide your own efforts.

In January we had such an opportunity with Allen Bentley who also judged the Walker Chapel show. I once had a kindergarten teacher complain to me that in art class my son would not color within the lines. To her horror, I was delighted! Allen Bentley doesn't color within the lines as his art exudes motion, tension, and activity. Whether in charcoal or oil, he seeks a push / pull motion with subjects rarely centered and certainly, not poised. As he paints, he asks, "where is the motion?" Think of the whole, not the parts and paint the motion. Focus on one thing in detail and let all the rest fall away...your brush should not be your camera. He brings punchy colors to his palette and highlights the motion with these intense colors.



He first photographs everything testing angles and lighting but is quick to say painting from photographs is the worst thing you can do. If you try to make your art look like the photograph you don't learn how to build in depth. You also rob your viewers of the joy of connecting the dots in their own mind's eye and taking your works to heights you yourself cannot paint. Allen also does not usually

place a frame on his works but lets the client choose the frame.

His works often start with a charcoal sketch and sometimes the work itself stays in charcoal.



For such works he will blanket an area with charcoal and then brush it down with a 2" brush and carve the image using an eraser. The results are striking!



Allen also gave some tips in marketing and promised to come back to just talk about the business side of being an artist. The problem an artist faces every day is being good doesn't always sell. You need to promote, publicize, display, be in shows, and meet your buyers where they are.

You can visit Allen at his website <https://www.allenbentleystudio.com/>



McLean Art Society - February 2022

Members in Action

From Asmita Nagar Upadhyay

I recently sold this painting at Springhill. The work is titled Fishes and is made in mixed media. It is symbolic in the circular movement of the fish represents the belief that all things in life are connected. The zodiac symbol for Pisces similarly depicts two fish swimming in a yin-yang fashion. Fish and water elements both represent good fortune, prosperity, and abundance in feng shui. When you put water and fish together, you can amplify the power of these symbols. The double fish brings good fortune of abundance and also brings protection and good luck!

Fishes



From Cathy Schwartz

I am trying something new! This is an oil on canvas I call Winston who is the cute cat in the corner! It is 20" x 16".



From Alex Tolstoy

I will be giving a free watercolor painting demo on Tuesday March 1st at 9am EST via www.ShopKeepArty.com. The live demo will be of this winter snow painting and will last an hour. You will need to pre-register on the SKA site.

Editorial note: At last check, the SKA site will be ready any day now. Alex is such a talent, this is a demo not to miss! With just a touch of image, luminosity, granulation where colors settle into patterns the result is a flowing soft and inviting artwork for us to love and try to emulate.

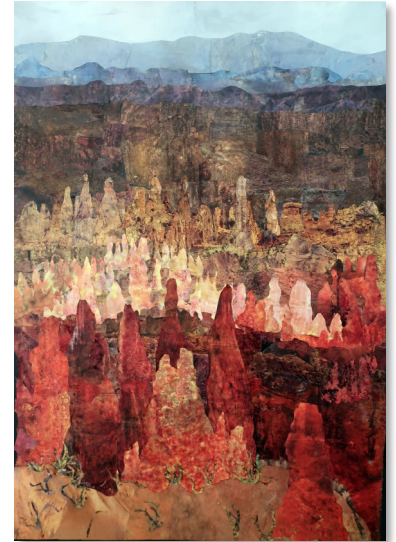


McLean Art Society - February 2022

Members in Action

From Hanna Emrich

Utah Rocks! A mixed media and collage that is 20" x 26". Utah was our favorite stop during three cross-country trips because of the variety and splendor of the landscapes and parks. This work is a collage of about 325 pieces of paper I made by spattering National Geographic magazine pages with Citrasolv solvent. The NG pages are printed on clay coated paper, which enables the solvent to spontaneously mix and spread the inks into the textured papers you see. I also added some acrylic highlights.



From Ray Goodrow

I have donated two watercolors for inclusion in the 2022 Patrons Show at the Alexandria Art League. The online show this year is Sunday, February 20, 2-6pm. Individual tickets are \$225., sales end February 19. This yearly event is the primary fundraiser for the Torpedo Factory Art Center. Typically a ticketholder can choose from over 600 works of art donated by Torpedo Factory exhibiting artists. The available artworks are currently up on the art league website. Details are at

[//www.theartleague.org/event/patrons-show-fundraiser-](http://www.theartleague.org/event/patrons-show-fundraiser-)



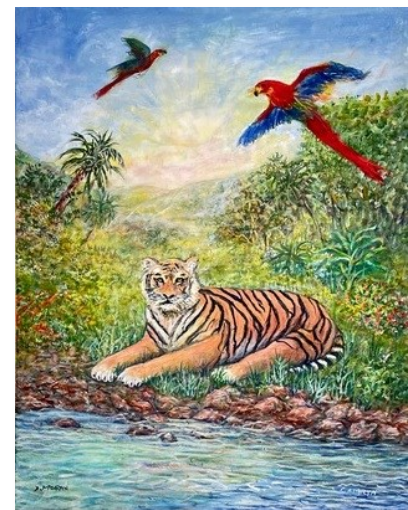
Lucky Chops
16" x 22" from 2020



Portland Lilly
16" x 22" from 2016

From Diane Moran

My 11 year old granddaughter's favorite animal is a tiger and her favorite bird is a parrot. She asked me to do a painting for her combining the two. This is the almost completed result. Is done with acrylics and is a large 22" x 28". Having 9 grandchildren, I could be kept busy doing special requests for a long time!





McLean Art Society - February 2022

SCULPTOR'S CORNER

This is a new section to the newsletter to cover an art form not seen much in the Society but abundant in history. There are many types of sculpture whether you approach the art from a medium base or from a technique base. Modeling in clay is popular at home and studio as is wood carving. When you move into stone carving and bronze casting it gets heavy and hard.

Do we have any sculptors in the crowd?

From Larry Danforth

In a rare sculpture opportunity, I restored the altar at Walker Chapel United Methodist Church. The center of the three panels on the altar has the Chi-Rho symbol. This Christogram is formed by combing the first two letters of the Greek word Christos, which means "Christ." The carving of wheat on the left represents the bread of life and the carving of grapes and wine on the right represents the blood of Christ and Holy Communion.



The wheat and grapes carvings had been whitewashed to the point they disappeared. Early art lessons taught me the importance of contrast and so I started with a good base of metallic gold paint and then used acrylics to add hints of color. A nice mix of red and blue to create the purple for the grapes. Indian yellow and raw umber for highlights in the sheaves of wheat. A touch of sap green on the leaves and Van Dyke brown on the stems. All paint applied very lightly and sparingly to not obscure the gold base.



The results are stunning even from the back of the Sanctuary some sixty feet away.

The carvings were done by Stan Kochinski of Lynchburg, VA, a Polish refugee artist who came to the United States in 1951. Some of his most notable work can be found in the First Methodist Church of Douglas, GA, and the Noland Memorial Methodist Church in Newport News, VA.



McLean Art Society - February 2022

Our Board

MAS Executive Board

2021-2022

President – Anna Katalina

Vice President – Sandra Hill

Secretary – Christy Kill

Treasurer – Judy Landry

Chairs

Directory – Hanna Emrich and Lori Lisiecki

Email distribution – Lori Lisiecki

Facebook – Anna Karalkina

Hospitality – Hanna Emrich

Instagram – Christy Kill

Membership – Lori Lisiecki

Name Tags – Diane Moran

Newsletter – Larry Danforth

Parliamentarian – Mary Jeanne Martz

Patron's List – Gerda Lane

Program Coordinator – Dorothy Hassan

Publicity – Renee Alberts

State Agent – Ginger Sanaie

Venues

Oak Marr – Margaret Raymond

Spring Hill – Carol Higgs and Carol Milton

'Westover Library – Bill and Betty Dunn

Dolley Madison Libraray – Olga Martin

MPA/TD Bank – Hanna Emrich and Vicky Wilken

Volunteer Coordinator – Jane Coonce

Webmaster – Larry Danforth

At Large Members – Ginnie Luster and Vicky Wilken

INSTAGRAM PAGE:

<https://www.instagram.com/mcleanartsociety/>

You should be able to view it from any browser, but to see our page fully, you may need to have an Instagram account. If so, just go to www.instagram.com to sign up.

Here is a link to a YouTube video that is very helpful in getting started:

<https://m.youtube.com/watch?v=no55N1sHjT8>

FACEBOOK PAGE:

The page is called McLean Art Society.

Click [HERE](#) to view the page.

To sign up with a new account, go to facebook.com and click on **Create New Account**. Enter your name, email or mobile phone number, password, date of birth and gender. Then click on **Sign Up**. To finish creating your account, you need to confirm your email or mobile phone number.

The Mclean Art Society Palette

The Palette newsletter is a monthly production of the McLean Art Society and while intended for the active members and sponsors of the Society, distribution is unrestricted and unrecorded. All stories and artwork are printed with permission of the artist. All content is ©Copyright protected by the McLean Art Society and individual works are ©Copyright protected by the artist. No reproduction of any artwork is permitted with the express permission of both the McLean Art Society and the artist that created the work. Your cooperation is appreciated.



McLean Art Society - February 2022

DOLLEY MADISON LIBRARY

If you enjoy creating small pieces of art, this is a good place to show them! They will be displayed in the glass case at the entrance of the Library. An easel is needed for each piece.

The smaller the pieces, the better --preferably smaller than 8 x 10"-- since space is limited. (There are only three (3) shelves in the case.)

The label should be proportionally smaller --so as not to distract from the piece. (See photo below). A 'tent' type label is requested, so it can stand next to the piece (about 1.5 x 2.5"). The Library does not allow the price to be shown on the label, but there will be a price list available at the front desk for prospective buyers. [Info on label should include: name of piece, name of artist, medium and, if desired, a phone number.]

The Show will be on display during the whole month of May.



There will be a sign-up sheet available at the next monthly meeting. However, you can register your interest to participate before then by sending Olga an e-mail directly. (The e-message's date will determine the order of reservation on a first-come-first-served basis.)

This time around they prefer for **one person only** to bring all the pieces and place them in the case, rather than having all the artists congregating there at the same time. More details to follow...





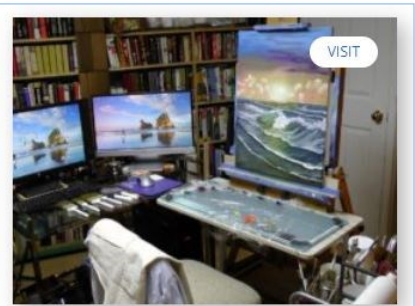
McLean Art Society - February 2022

OUR WEBSITE—UNDER CONSTRUCTION

Our artists are our treasure. The purpose of our website is to display their art and for many, facilitate communication leading to a sale. Our business plan is to attract visitors, engage buyers, facilitate sales, and grow the membership. The new website's design is full-screen, clean looking, makes use of white space, and minimizes distractions from the art being displayed. In this last case the MAS website is the opposite of most websites which struggle to have images and graphics to highlight their site. They employ graphical tricks of animation, parallax effects where the background image is static while the foreground words float over the graphic, they use fades, slides, flips and bounces to make the boring words interesting.

We have all the images we need...your art viewed on a white background. The art may have motion, but it is not in motion. We choose to let your beautiful art speak for itself while our computer skills are used to simplify navigation and communication.

The first thing a visitor sees when the site's landing page comes up is the invitation to VISIT OUR ARTISTS. When the visitor clicks on the VISIT button, our gallery of artists comes up with all our artists showing in a grid that is six columns wide on a desktop computer and two columns wide on a smart phone. The grid is many rows deep and can paginate.



OUR ARTISTS

Enter our Gallery where you can search for art by category, style, and subject. Visit with the artist and see their complete collection.

- All
- Abstract
- Faith
- Oil
- Realistic
- Watercolor



Sanie Ginger
Oil, Realistic, Watercolor



Hassan Dorothy
Oil, Realistic



Palco Pam
Realistic, Watercolor



Alex Tolstoy
Abstract, Watercolor



Anna Katalina
Abstract, Oil



Lawrence Danforth
Abstract, Faith, Oil, Realistic

Note: this grid replaces the lists of names used by the prior website

Above the gallery images there is a simple word filter that uses the same category words you used to define your class of artwork. Visitors can click on any word and have the gallery redisplay with only artists that have included that word in their definition, a much shorter list to consider. For example, if you select "ABSTRACT" then only artists that do abstract paintings will appear. Only one word can be selected at a time, but this simplicity makes it easy for our visitors.



McLean Art Society - February 2022

HOMEWORK ASSIGNMENT #1: GETTING LISTED IN THE GALLERY

We are the web mechanics that know how to build the gallery...only you, the artist, knows what it should contain. And so it is a partnership where we both expend some sweat equity and share in the beautiful outcome.

You select the **one** painting displayed and how you want to see your name...Jacqueline or Jackie? And you select the categories that best describe your art...oil or watercolor, charcoal or pencil...abstract or realistic.

You do this on the website by filling out a form where you also upload your selected artwork and upload a photograph of you or an avatar.



The form can be found by going to our development sandbox for the new website:

<https://www.noahworks.org/portfolio-info/>

*Perhaps a little disclaimer...*the website is like a new car just entering the assembly line. No wheels, seats, headlights, engine, or radio. Just a shell to be completed as we work together. So don't be surprised if you find something missing, something really ugly, or wrong. But if you have a better idea for a page, do let us know! Our goal is to make the site be what you want it to be!

THE PORTFOLIO INFO FORM

The form is under the Membership menu option (in case you get lost). The form is in a panel on the left side of the screen and the explanation or objective is discussed in a panel on the right.

If you click the second button that you have no art to display or click the third button that you are a patron follower of MAS, then all you have to do is consider putting something in the optional comments field and click on Submit. It looks pretty simple, no? Fill in your name, email, click a button...

But we are artists! So we click the first button granting MAS permission to display our art and as you see on the next page, the form suddenly opens up with choices for art categories, for subject matter, an upload for your featured art, and an upload for your photo or avatar.

We may have too many codes right now and perhaps we should have more art categories. We will look at the codes you use and work towards the simplicity of fewer codes. We will also be listening to your ideas and comment on how to better classify the works of our community. We know of many other classification systems but seek simplicity that our patrons can easily use.

Artist Showcase Information

The information here will be used to display on the filterable artist gallery page of all MAS artists with a personal gallery. Visitors may filter on the information to develop a list of artists they should visit online.

Name *

First Last

Email *

Your email will not be displayed on the website without your permission.

Authorization to display your art *

You have my permission to display my art

I have no art to display but wish to participate in MAS

I would like to be a patron sponsor

Anything else you would like us to know?



McLean Art Society - February 2022

THE PORTFOLIO INFO FORM

Artist Showcase Information
The information here will be used to display on the filterable artist gallery page of all MAS artists with a personal gallery. Visitors may filter on the information to develop a list of artists they should visit online.

Name *

First: Last:

Email *

Your email will not be displayed on the website without your permission.

Authorization to display your art *

You have my permission to display my art
 I have no art to display but wish to participate in MAS
 I would like to be a patron sponsor

Art Categories: Check as many as apply *

Painting
 Sculpture
 Photography

Subject Matter: Check as many as apply *

Literary Abstraction Animals
 Cityscape Religious Figure
 Genre Historical Narrative
 Landscape Non-Objective Portrait
 Seascape Self Portrait Social Comment
 Still Life


Upload an example of your work to use as your featured artwork *
 No file chosen

Upload a photograph of yourself for your personal gallery page *
 No file chosen

Anything else you would like us to know?

What kind of art do you want to display? What is the range of your subject matter?

Upload an image of the artwork that is typical of your portfolio. It does not have to be perfect and square, but make sure all outside edges, including frame, are inside the picture. The image must be either a .png or .jpg.

Now do the same for an image of yourself or an avatar which is just an image such as 

Just when you are getting comfortable, you click on Painting as an art category and **boom!** the form opens again asking about your painting mediums and styles.

Painting Mediums: Check as many as apply *

Acrylic Chalk Charcoal
 Graphite Pencil Oil Pastels
 Tempera Watercolor

Painting Styles: Check as many as apply *

Abstract Cubism Fantasy
 Graffiti Impressionist Modern
 Photorealism Pop Realism
 Surrealism

If you unclick the Painting button, the new fields disappear, but you can also check Sculpture or Photography and more questions appear for those art categories.


Please give it a try **soon** as we would like to build the full gallery by mid-March! We will be monitoring the system and are notified every time a Submit button is clicked. No need to be perfect...there will be plenty of time for you to get comfortable and make changes later.

A preview of where we are going...

[Individual Artist Studios >>>>](#)

and/or a link to your own website

Lawrence Danforth



About Me

My Paintings Biography

I finally took the leap to painting in oils for the first time in May of 2020. After painting a hundred trees I did Mountain Lake shown here with the best sky and lake and a white, snow covered mountain.

It took 5 days with multiple scraping off the paint and starting over but it was worth it. Love it! Don't try to make it look like a photograph. All the painter's muscle eye cannot do otherwise.

Come join in the fun...oil painting is very forgiving and workable for days.

Contact Me

Name: First Last

Your email address:

Best phone to use to reply

How can I help you?



McLean Art Society - February 2022

EDITORIAL

The presentation by Allen Bentley this past general meeting started me thinking about my comfort zone with the Society...a big factor for anyone considering joining as well as continuing as a member.

If you seek kindred spirits, good and loyal friends, and cool activities, you will love the Society. As an artist, if you seek challenges and change, new viewpoints, people with different backgrounds, cultures, languages and art, you will love the Society. In the words of our dear Asmita, a classic yin-yang relationship that describes how obviously opposite or contrary forces may actually be complementary, interconnected, and interdependent.



The diversity in mediums and styles from artist to artist is as varied as the artists themselves. Oil painters are enthralled by how watercolorists defy gravity as they move water-borne colors around the page. To acrylic painters oil painters are magicians as they work wet-on-wet and leverage transparent colors in layers from edge to edge.

In the Society everyone is an individual and so talented at what they do! Yet, when it comes time to do a show, everyone is on the same team. When a member stumbles, the compassion of the group is palpable.

We are the McLean Art Society, together we decorate the world with our art. You are most welcome whether a seasoned professional or just learning which end of the brush to dip in the paint. Give us shout [HERE](#) if we can be of assistance.

MAS KNOWLEDGEBASE

Questions and responses from our community of artists will be published to a new Q&A section on the new website so the Society may be a [knowledgebase](#) for new and current members alike.

PAINT: I bought oil paint in 200ml tubes not knowing how much paint it took to do a painting. The paint keeps separating in the tube and repeated squeezing has caused metal fatigue and paint leaks everywhere. My questions are: what is the best size tube to buy and what are the best buttery paints that don't separate?

FRAMES: None of my paintings are framed and frames are so expensive. Are there any reasonable sources for frames? What do you use? How do you account for the cost of the frame in the cost of your artwork?

VARNISH: I recently varnished many of my more than 6 month old oil paintings and love the results. I used Gamblin Gamvar Gloss which was super easy to apply and dried in short order. It said it could be applied as soon as the oil is dry but I have also heard you should wait six months. Which is correct?

PAINTER'S BLOCK: I have a tough painting on my easel. Just the underpainting has been done. I have painter's block and haven't touched it in four months. Does this ever happen to you? How do you get around it? My solution for now is to just set the painting aside and knock out some simple Bob Ross numbers that only take 3-4 hour for an 18x24 canvas and get the juices flowing again.