



McLean Art Society

Palette

March 2022

From the president

Time to shake off the winter blahs and start painting!

We held our second general meeting on February 25th with a good round of discussions including new opportunities for displaying (and selling!) your art.

In the second half of the meeting, artist Ann Wallace gave a complete start to finish presentation on creating a still-life of flowers in a vase using chalk pastels. Ann's presentation is now open on our emerging website at www.noahworks.org and going to the menu option [Membership >> Program Artist](#).

Our new venue at Oak Marr Recreation Center in Oakton is rapidly coming online. The space is similar in concept to the Spring Hill Recreation Center, but has more walls, including the one in the main lobby. Betty Ganley is leading the initial arrangements; Margaret Raymond is the curator-coordinator. Margaret will send out further information when details are worked out with the venue. We anticipate that artists will be able to hang two pictures on days different from the Spring Hill hanging not to interfere with the SH schedule.

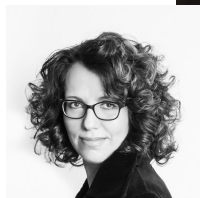
The Dolley Madison Library display of small items is just around the corner! Olga Martin has taken the lead so please coordinate with her as only she can place items in our glass cabinet. The details will be forthcoming but you can look at last month's *Palette* for pictures of the venue.

Our next meeting will take place on zoom on March 25. General meeting will start at 10am, followed by Elizabeth Vismans, artist, certified NLP practitioner, and life purpose coach, who will discuss painting and intuition. The zoom link will be sent to the membership two days before the meeting.

See you on the 25th,

Anna

Anna Katalina
President MAS



News & Notes

McLean Art Society

Meets every 4th Friday of the month.

Next meetings:

March 25: General Membership Zoom
with **Elizabeth Vismans**, artist, certified NLP practitioner, and life purpose coach to discuss painting and intuition

April 22: General Membership in-person at MCC
with **Anna Katalina** demonstrating her unique multi layer painting technique

May 20: General Membership with **Nathaniel Williams** demonstrating his use of watercolor and underpainting in the form of value studies

Spring Hill

One of our favorite places with easy access.

See Carol Higgs' email 3/6 @ 6:41pm on steps to follow.

March 8, 2022 to April 19, 2022 **Happening NOW!**
April 19, 2022 to May 24, 2022

Dolley Madison Library

A special opportunity during the month of May for display and sale of small footprint artwork in a sealed glass case. Call Olga Martin for details.

Oak Marr Recreation Center in Oakton

A new opportunity similar to Spring Hill coming soon...watch for details from Margaret Raymond.

The William and Mary Symphony and the Virginia Chamber Orchestra

March 26th., at the new Capitol One Hall in Tysons

ON DISPLAY: Works by McLean Arts Society painters

Anna Katalina, Christy Kill, Dipali Rabadiya,
Cathy Schwartz and Dorothy Spruzen Hassan

See Page 5 for details and tickets



McLean Art Society - March 2022

McLean Art Society Artist of the Month

CAROL WAITE

By Palette Editorial Staff

My medium is Sumi-e, East Asian Brush Painting on rice paper. Most of my paintings depict nature -- flowers, birds, landscapes which I find beautiful and soothing. As I grew up in Japan, this medium takes me back to many memories. I went to George Washington University with an art major, and studio time at the Corcoran Gallery. Please visit my website at www.carolwaitepaintings.com to view the gallery of all my works, a tutorial on Sumi-E



Blue Heron Splash



Three Koi



Wisteria & Bees



Poppies

Yellow Lotus





McLean Art Society - March 2022

ANN WALLACE

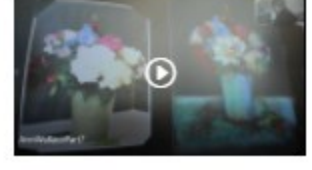
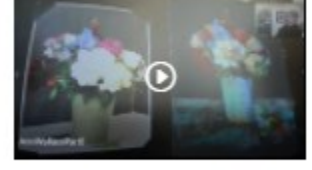
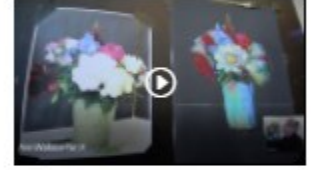
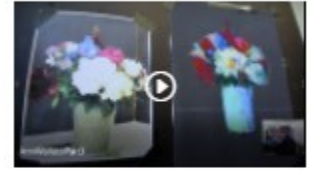
By Palette Editorial Staff

Click the link to see Ann's step-by-step [tutorial on creating a chalk pastel still life!](#)

Over eight short (~7min) videos you will spend an hour with Ann. With her humor, advice and skill she reveals the process of going from a blank piece of sanded paper to a colorful work of art. Come get inside her head, look at the world and art as she sees it, and you have a tutorial to guide your own efforts. Best of all, it is captured on video so you may go back anytime and look again at any segment.

Ann is also a copyist at the National Gallery of Art. Below are her copies of J.M.W. Turner's *Rotterdam Ferry-Boat* and *Keelmen Heaving in Coals by Moonlight*; **Thomas Gainsborough's *Seashore with Fishermen***; and **Worthington Whittredge's *Second Beach, Newport***. Below that a few of her heartfelt paintings.

Come Visit My Website



Afternoon Snack



Comfort Zone



Laguna Cliffs



Prelude to a Tidepool

You can visit Ann at her website <https://www.annwallaceart.com/>



McLean Art Society - March 2022

Members in Action

From Dipali Rabadiya

"Stacked cups with orange", an oil painting on 6x6 inches ampersand gessoboard, has been sold and headed to Australia. I submitted this painting on dailypaintworks.com monthly contest. It has been selected as judge's pick along with 14 other artist. so, my work will be in front page as a featured artist. I am also displaying my work Virginia hospital center in the orthopedist office. Visit me at www.dipalirabadiya.com



From Anna Katalkina

This painting was chosen to be sent along with another to the Antiques and Garden Show of Nashville as a part of the Capital Artists Collective gallery's display.

The painting is one of the five paintings I did after reading The Book of the Thousand Nights and a Night. It was the unabridged version, compiled in 1885 by Sir Richard Burton (British explorer and diplomat, who spent years in the Middle East), the grown-up tales really, and contain lots of tales unknown to the wide public. This tale is called The Tale of The Sweep and the Noble Lady. It's a story of lighthearted revenge ;) I have depicted the scene, where a super-filthy sweep in rags is brought to a rich lady's palace and is swept by its magnificence. Hence, the opulent high-detail carpet. The lady is the doll with a peacock feather.



This is essentially a still life with a twist. Why did I use dolls for the objects? Because it's a bit like imaginary play that kids might do on a theme of this story or that. Richard Burton's collection was a part of the end-of the 19th century Western society's movements of Romanticism and Orientalism, where adults idealized and imagined what a far-away long-ago Orient looked like. In a way, adults fantasy-played in their minds, like kids play with dolls.

The carpet is an image of an actual Persian carpet, that I put in perspective. The piece is painted in the Dutch Masters' technique, which involves multiple glazes of translucent paint. This technique is very rare these days, but is inimitable, since it produces a certain luminosity that alla prima techniques does not.

From Christy Kill

I have been taking classes through the Smithsonian Institute - their associates program. I'm actually getting a World History Art Certificate through them. You don't have to do this, but their classes are wonderfully ran and I'm learning a lot Most classes are over zoom making it extra convenient. Perhaps others in the group would be interested in a class or two. Here's more info: <https://smithsonianassociates.org/ticketing/search/?query=Art>

And about the certificate specifically: <https://smithsonianassociates.org/ticketing/certificate/world-art-history>





McLean Art Society - March 2022

Special Event!

On March 26th., at the new Capitol One Hall in Tysons, the William and Mary Symphony and the Virginia Chamber Orchestra perform Dvorak's Symphony No. 8, inspired by Bohemian folk tunes. Violinist Benny Netzer, winner of the Symphony's Concerto Competition, will be featured soloist in the Allegro moderato from Wieniawski's Violin Concerto in D minor. The VCO will also perform Quiet City by Aaron Copland and the WMSO will perform the Adagietto from Mahler's Symphony No. 5

ON DISPLAY: Works by McLean Arts Society painters

Anna Katalkina, Christy Kill, Dipali Rabadiya, Cathy Schwartz and Dorothy Spruzen Hassan

Go to TicketMaster for Concert Tickets – [Click here](#)

DISCOUNTED TICKETS FOR GROUPS (\$30 or \$40): [McLean Art Society](#)

From Hanna Emrich

Here are two examples of my work with Sharpie markers (or Sharpie pen and ink)...May Bouquet, 16 x 20, Sharpie pen and ink and collage and Cherries, 8 x 10, Sharpie pen and ink.

Sharpie markers are very versatile. They permit a broad array of shades, ranging from deeply opaque tones achieved by multiple washes with the pen, to very light tones, which can be achieved by dipping the Sharpie pen points in 91% isopropyl alcohol. Each Sharpie can yield 4 - 6 different shades. Therefore, a collection of 36 Sharpie pens can provide you with a palette of 144 to 216 colors.



From Renee Alberts

I just returned from a week in California. These 2 Paintings are inspired by photographs I took in the Oceanside park at Laguna Beach. This area is an artist's Paradise with fabulous scenery and Art Galleries lining the streets.



From Jane Coonce

I feel honored that I have been selected to be the juror for an art show for The Working Artists Forum (WAF). This is an organization of professional artists based in Easton with a wide membership from across the state. The show will be at the Columbia Art Center. Thirty-six of its members will be exhibiting their art at the Columbia Art Center in Columbia, Howard County, MD from May 6 to May 29, 2022. The Columbia Art Center offers a prestigious exhibit venue with two galleries to display for sale the art of the participating WAF members.

WAF
Working Artists Forum, Inc.



McLean Art Society – March 2022

Our Board

MAS Executive Board

2021-2022

President – Anna Katalina

Vice President – Sandra Hill

Secretary – Christy Kill

Treasurer – Judy Landry

Chairs

Directory – Hanna Emrich and Lori Lisiecki

Email distribution – Lori Lisiecki

Facebook – Anna Karalkina

Hospitality – Hanna Emrich

Instagram – Christy Kill

Membership – Lori Lisiecki

Name Tags – Diane Moran

Newsletter – Larry Danforth

Parliamentarian – Mary Jeanne Martz

Patron's List – Gerda Lane

Program Coordinator – Dorothy Hassan

Publicity – Renee Alberts

State Agent – Ginger Sanaie

Venues

Oak Marr – Margaret Raymond

Spring Hill – Carol Higgs and Carol Milton

'Westover Library – Bill and Betty Dunn

Dolley Madison Libraray – Olga Martin

MPA/TD Bank – Hanna Emrich and Vicky Wilken

Volunteer Coordinator – Jane Coonce

Webmaster – Larry Danforth

At Large Members – Ginnie Luster and Vicky Wilken

INSTAGRAM PAGE:

<https://www.instagram.com/mcleanartsociety/>

You should be able to view it from any browser, but to see our page fully, you may need to have an Instagram account. If so, just go to www.instagram.com to sign up.

Here is a link to a YouTube video that is very helpful in getting started:

<https://m.youtube.com/watch?v=no55N1sHjT8>

FACEBOOK PAGE:

The page is called McLean Art Society.

Click [HERE](#) to view the page.

To sign up with a new account, go to facebook.com and click on **Create New Account**. Enter your name, email or mobile phone number, password, date of birth and gender. Then click on **Sign Up**. To finish creating your account, you need to confirm your email or mobile phone number.

The Mclean Art Society Palette

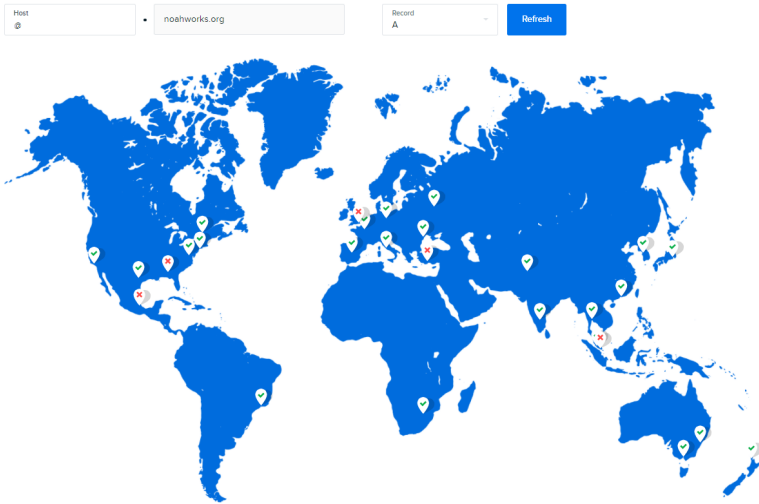
The Palette newsletter is a monthly production of the McLean Art Society and while intended for the active members and sponsors of the Society, distribution is unrestricted and unrecorded. All stories and artwork are printed with permission of the artist. All content is ©Copyright protected by the McLean Art Society and individual works are ©Copyright protected by the artist. No reproduction of any artwork is permitted with the express permission of both the McLean Art Society and the artist that created the work. Your cooperation is appreciated.



McLean Art Society - March 2022

OUR WEBSITE—UNDER CONSTRUCTION

The website is close to completion and we hope to go live this month. Several have asked “why are we using noahworks, don’t we want it to be mcleanartsociety.org? Our new website is still in its “sandbox” so it does not interfere with the live site at mcleanartsociety.org. When it comes time to shift to the new website, it is like notifying the Post Office that you have moved. You give them the new address and the mail comes to you in your new home. In the Internet there are many computers that help you get from where you are to the MSA website and back...they are called Domain Name System [DNS] servers and they are all synchronized to know how to pass the mail along it’s way.



```
Tracing route to noahworks.org [69.163.227.34]
over a maximum of 30 hops:
  0  0 ms  0 ms  0 ms  192.168.0.1
  1  6 ms  4 ms  3 ms  10.7.96.1
  2  12 ms 12 ms 10 ms 100.118.110.148
  3  23 ms 15 ms 11 ms 100.121.20.8
  4  16 ms 13 ms 10 ms ashbbpr01-ae2.rdr.as.cox.net [68.1.0.242]
  5  18 ms 13 ms 10 ms ash-b2-link.ip.twelve99.net [213.248.76.24]
  6  12 ms 13 ms 12 ms ash-bb2-link.ip.twelve99.net [62.115.123.124]
  7  *      16 ms *
  8  19 ms 20 ms 17 ms nyk-bb2-link.ip.twelve99.net [62.115.136.200]
  9  100 ms 109 ms 106 ms port-b1-link.ip.twelve99.net [62.115.115.25]
 10  100 ms 99 ms 105 ms port-b1-link.ip.twelve99.net [62.115.115.25]
 11  93 ms 92 ms 93 ms wavebusinss-1c337495-port-b1.ip.twelve99-cust.net [62.115.33.125]
 12  90 ms 91 ms 92 ms 216.243.25.90
 13  95 ms 93 ms 93 ms pdx1-cr-1.sd.dreamhost.com [66.33.200.2]
 14  90 ms 92 ms 155 ms pdx1-a7u27-acc.sd.dreamhost.com [66.33.200.56]
 15  91 ms 93 ms 175 ms apache2-udder.eigin.dreamhost.com [69.163.227.34]
Trace complete.
```

The trace above shows 15 hops to get from my desktop to the noahworks host. The map to the left shows the location of a small portion of the DNS servers around the world where a green check shows they know about us.

YOUR PERSONAL GALLERY ON OUR WEBSITE

As a benefit of active membership, each member may have a personal art gallery on our website. The starting point is on the website at www.noahworks.org where on the top line you will find the main menu. Hover over the “Membership” option and move down to click on “Personal Gallery”. We usually annotate this as “Membership >> Personal Gallery.”

The Personal Gallery page contains two buttons. The first is to establish your profile on the website. The second is to upload up to five art works at a time through as many cycles as needed.

Once the base information is in hand, the website team will create your personal gallery by adding your name to the list of artists on the home page, by coding your profile as you instruct so visitors may, for example, find all “abstract” artists. The team will place your name at the top of your page, add your art in your gallery, add your biography, and add a custom “contact me” form to make it easy for prospective buyers to open a conversation with you. The personal gallery page is your page and so we can add features such as a button linking to your actual gallery. We look forward to working with you to make your gallery be what you want it to be.

The screenshot shows the website's navigation bar with links for Home, About Us, Calendar, Membership, and Contact Us. Below the navigation is the 'McLean Art Society' logo and a section for 'Our Artists' listing names like Ronae Alberts and Jane McElvany Concoe. The 'Personal Gallery' page is visible, featuring search filters for 'SUBJECT MATTER' and 'BY PAINT'. Two buttons are highlighted: 'Portfolio Info Form' and 'Upload Art'. A text box explains that as a benefit of membership, each artist may have a personal gallery on the website, and visitors can search for artists by name, medium, style, and subject matter.



McLean Art Society - March 2022

MAS KNOWLEDGEBASE

As a beginning artist and maybe like some of you, I have a lot of questions about what paints to use, where to get frames, to varnish or not, and how to get unstuck when a piece is taking too long.

Most professional websites have a repository of Frequently Asked Questions or **FAQ's**, or **BLOGS** (binary logs) written by members offering guidance, and even **videos** like the one on our website of [Ann Wallace's presentation](#). These are combined into a knowledge database (knowledgebase) for all to share.

QUESTION OF THE MONTH

We are starting our FAQ's with a simple question:

PAINT: I bought oil paint in 200ml tubes not knowing how much paint it took to do a painting. The paint keeps separating in the tube and repeated squeezing has caused metal fatigue and paint leaks everywhere. My questions are: what is the best size tube to buy and what are the best buttery paints that don't separate?

ONE RESPONSE:

Most of mine are 37-40ml, it's the most common, and a couple that I use a lot of are 75ml. This lasts a long while. But I paint small and thinly. You might need to buy more often if you paint thick and large.

Brand is pure preference. You have to try and see what you like the best for color and texture. I use different brands. Avoid student grade, it's too much filler. Best quality is probably Michael Harding, pricey though. Gamblin is also great. Williamsburg is good, but I don't own any. Then below that Winsor and Newton, Rembrandt, Holbein — mass produced but fine too for most painters.



What Say You????

Email mas@uinspire.us

