



McLean Art Society

Palette

April 2022

From the president

The spring is in full swing and so are MAS activities. Five (plus the sixth in absentia) of our members participated in a partnership event with the Virginia Chamber Orchestra on March 26. We had a gorgeous display that would make anyone proud, a full page in the concert programme, and we enjoyed the concert and each other's company very much.

On April 22, after the General Meeting, I will be demoing IN PERSON at the MCC as the MAS Program Artist -- finally we get to reconnect off-line. I am a still life realist painter, who combines Dutch Old Masters' techniques with modern quirkiness. The technique I use is mainly indirect painting, which involves applying translucent glazes of paint onto an underpainting in order to subtly alter colors and tones.

In May, we have two shows coming up: a small treasures display at the Dolley Madison Library (all month) and "Art A Fair" Show at Walker Chapel on May 13-15. Olga Martin is coordinating the first, please review the details in the February edition of Palette. Those of you who are coming to the meeting on April 22nd and would like to participate in the Dolley Madison show, are welcome to bring your works and prepared labels to Olga and save yourself a trip. For the "Art A Fair" Show, please consult and act upon Lori's email with details and volunteering sign-up sheets to make the show a success. In addition, our new venue, Oak Marr, is moving along under the baton of Margaret Raymond, and we will be exhibiting there soon. And, on May 17, Jane Coonce is organizing the Celebrating of Life for Luda del Rose, the long time MAS member and past treasurer, who passed away recently. The event will take place at the Gallery Underground in Crystal City, will feature some of Luda's work and a quiet reception.

I am looking forward to seeing you all on April 22, 10am, in the usual McLean Community Center room.

Anna
Anna Katalkina



News & Notes

McLean Art Society

Meets every 4th Friday of the month.

Next meetings:

April 22: General Membership in-person at MCC with **Anna Katalkina** demonstrating her multi layer painting technique

3 Week Early

May 20: General Membership with **Nathaniel Williams** demonstrating his use of watercolor and underpainting in the form of value studies

Spring Hill

One of our favorite places with easy access.

See Carol Higgs' email 3/6 @ 6:41pm on steps to follow.

March 8, 2022 to April 19, 2022 **Happening NOW!**

April 19, 2022 to May 24, 2022

Dolley Madison Library: Small Treasures

A special opportunity during the month of May for display and sale of small footprint artwork (max 10x12" with thin frame) in a sealed glass case. Call Olga Martin for details and bring artwork to the 4/22 meeting.

Oak Marr Recreation Center in Oakton

A new opportunity similar to Spring Hill coming soon...watch for details from Margaret Raymond.

Update on Naomi Chung's November Demonstration

[CLICK HERE](#) to visit Naomi's update on our website along with Allen Bentley, Ann Wallace, Elisabeth Vismans, and next week our own Anna Katalkina!





McLean Art Society - April 2022

McLean Art Society Artist of the Month

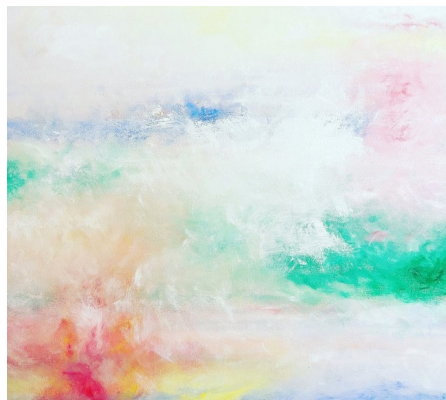
CHRISTY KILL

Christy Kill is an abstract painter with international visibility. Her work hangs in 11 countries around the globe. She is inspired by nature's movements and colors and she translates these emotions onto canvas. Her paintings are wispy and bold, and bring happiness with their expressionist style. Christy works primarily with acrylic and resin, offering a high-gloss finish. She also produces heavily textured abstracts in oil. For more information, visit:

www.Christykillart.com



10.10.20 36x48



Out for a Walk 24x24



Iceland 12x12



When we Meet 36x36



Christy with Outerbanks 36x48



I am the Vine & You are the Branches 24x48



McLean Art Society - April 2022

ELISABETH VISMANS

By Palette Editorial Staff

We spent an interesting hour with Elisabeth as we learned her approach to painting as an expression of a venture in intuition and creativity. Elisabeth was born and raised in the Netherlands and didn't start painting until 2004 when she became an empty nester. She is an Award-Winning Artist, Art Instructor in the Yellow Barn, Glen Echo for over 10 years. She's also a Certified Life Coach and Certified Neuro Linguistic Programmer. A stern believer that painting is for the most part a mind game she uses these skill sets in all her teachings.



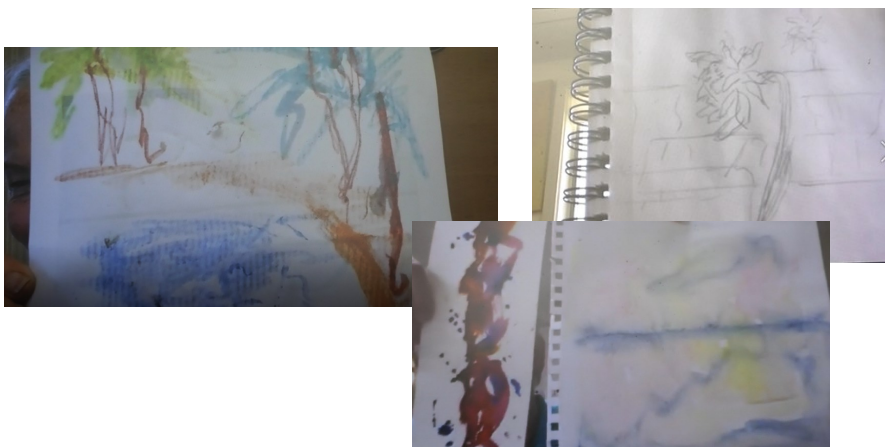
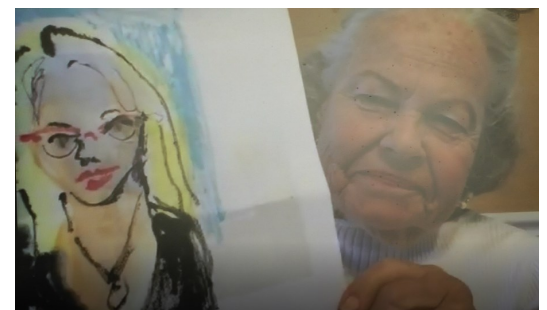
Elisabeth's lesson today is *Intuitive Painting and Visual Journaling and the Importance of Intuition in Art*. It is possible to make something really beautiful without planning. Work with your unconscious mind and let the vision come to the surface. It is about enjoying what you are doing and less about the end result. How to get into that "zone" where you are free rather than going down a fixed path for a fixed product. Like a child just has fun with color and light and if it doesn't look like a horse at the end, that is perfectly okay. With visual journaling you paint your feelings and don't judge yourself along the way.



Start with relaxing and focusing on your feelings. Free yourself from those feelings that distract and inhibit. Transfer those feelings to paper, quickly, intuitively. The message is it can reduce stress, release anger, resolve conflict...or just reflect that you feel pretty good! So get in the mood you want, in the place you want, and go. The mood will be reflected in the painting...the one shown above was done in about 3 hours and when replicated...the mood wasn't the same and the end result was different.



We then started with two little paintings! In a flash Renee created a portrait of Elisabeth. For the second painting Elisabeth had us relax and think about the next painting. When you know the feeling, paint it...quickly like a doodle. Again, Renee came forth with a free and intuitive painting that, in her words, felt good! Dorothy and Ginger soon followed.



You can visit Elisabeth at her website <https://www.Elisabethvismans.com/>

Visit her [Facebook](#) page to see more of her sharing her approach with her students. Even better...try it yourself and see if intuition and speed works for you.



McLean Art Society - April 2022

Pass the Word
Come to the Art A Affair



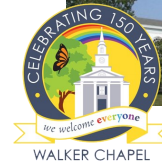
Art A Fair

Our Spring Art Show will be held at Walker Chapel United Methodist Church starting with setup at 1:00pm on Thursday, May 12th. Sale times will be during the reception from 5-8pm on Friday, May 13th, Saturday from 10-4pm, and Sunday from 10-2pm. Let Lori know how you can HELP!

In her email on 4/2 Lori asked that you submit an entry of \$30 check **made out to MAS** and mail it to her. When she receives it, she will email you an inventory sheet to list all of your sale items. Complete and turn it in when you deliver your paintings. It will be used to track all artists' sales. We are looking for your best work. No hanging work is to be priced under \$100. Tabletop pieces may be under \$100. MAS will take a 10% commission on all sales.

You may submit up to 3 hanging paintings to fit on 32" wide screens. All paintings must follow MAS framing/hanging guidelines and have PRINTED sales labels attached using the MAS format button on the [website](#). You may bring two small (no larger than 8"x10" including frame) table pieces with your own easels. You may bring up to 15 shrink-wrapped bin pieces. Please coordinate bin sharing if you don't have your own. You may also bring cards for sale. You may replace items as they are sold.

We will not have a judge, but will again have People's Choice awards for 1st, 2nd and 3rd places as voted on by our guests. The awards will be announced Sunday afternoon.



4102 N. Glebe Road
Arlington VA, 22207

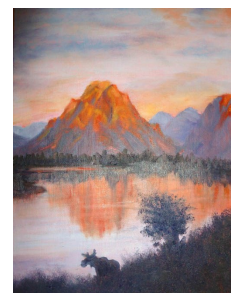
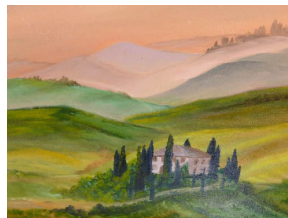
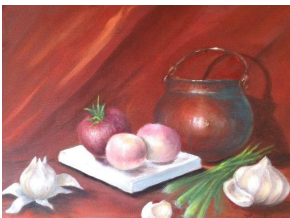


Celebration of Life for Luda

Tuesday May 17th from 4 to 6pm.



Please help us celebrate the life of Luda Del Rose at the Gallery Underground. See Jane Coonce's plan in Anna's email of April 11th on how you can help. All artists and friends are invited!





McLean Art Society - April 2022

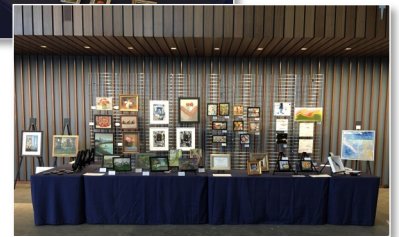
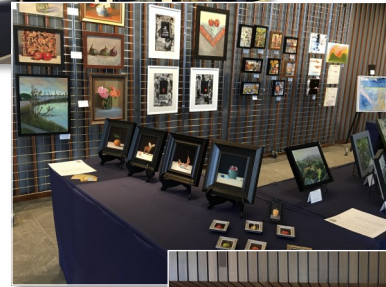
Members in Action

From Anna Katalikina

On March 26th., we were at the Virginia Chamber Orchestra concert where we had a gorgeous display that would make anyone proud, a full page in the concert programme, and we enjoyed the concert and each other's company very much. At the new Capitol One Hall in Tysons, the William and Mary Symphony and the Virginia Chamber Orchestra performed along with violinist Benny Netzer, winner of the Symphony's Concerto Competition.

ON DISPLAY: Works by McLean Arts Society painters

Anna Katalikina, Christy Kill, Dipali Rabadiya, Cathy Schwartz and Dorothy Spruzen Hassan



YOUR PERSONAL GALLERY ON OUR WEBSITE

As a benefit of active membership, each member may have a personal art gallery on our website. The starting point is on the website at www.mcleanartsociety.org where on the top line you will find the main menu. Hover over the "Membership" option and move down to click on "Personal Gallery". We usually annotate this as "Membership >> Personal Gallery."

The Personal Gallery page contains two buttons. The first is to establish your profile on the website. The second is to upload up to five art works at a time through as many cycles as needed.

Once the base information is in hand, the website team will create your personal gallery by adding your name to the list of artists on the home page, by coding your profile as you instruct so visitors may, for example, find all "abstract" artists. The team will place your name at the top of your page, add your art in your gallery, add your biography, and add a custom "contact me" form to make it easy for prospective buyers to open a conversation with you. The personal gallery page is your page and so we can add features such as a button linking to your actual gallery. We look forward to working with you to make your gallery be what you want it to be.

The screenshot shows the website's navigation bar with links for Home, About Us, Calendar, Membership, and Contact Us. Below the navigation is the 'McLean Art Society' logo and a list of artists including Renee Alberts, Jane McElvany Coonce, Lawrence Danforth, Hanna Emrich, Anna Katalikina, Christy Kill, and Judith Landry. The 'Personal Gallery' page is displayed, featuring search filters for 'SEARCH BY SUBJECT MATTER' and 'SEARCH BY PAINT' (Acrylic, Chalk, Charcoal, Pastel, Tempera, or Oil). The page includes a 'Portfolio Info Form' and an 'Upload Art' button. A detailed explanation of the gallery creation process is provided in the text below the page.

SEARCH BY SUBJECT MATTER
 Country, Abstraction, Animals, Cottage, Religious, Figure, Genre, Historical, Narrative, Landscape, Sea, Ships, Non-Objective, Portrait, Seascape, Self Portrait, Social Comment, Still Life

SEARCH BY PAINT
 Acrylic, Chalk, Charcoal, Pastel, Tempera, or Oil

SEARCH BY MEDIUM
 Abstract, Cubism, Folk, Impressionist, Modern, Realism, or Surrealism

As a benefit of membership in the McLean Art Society, each artist may have a personal gallery on the website. The Home page, in the center column, lists all artists with a personal gallery. A simple click on the artists name takes the visitor to the gallery.

Visitors seeking artists that use a specific medium or have a particular style may also use the search capabilities listed in the left column on the Home page. This search capability filters out the artists and facilitates the connection between visitor and artist.

The website team collaborates with you in the creation of your gallery. The starting point is the Portfolio info form activated by the first button to the right. This form establishes your art form, medium, style and subject matter...all elements for the search engines. It also provides the website team a representative sample of your work and a favorite photo of yourself.

The second step is to use the Art Upload form which establishes the title and description of a single art piece and an image of that art piece. Up to five may be uploaded at one time and the form may be used over and over to upload more.

The website team will use the information to create your personal gallery and then continue to collaborate with you to tailor it to your needs and new art as it comes over the years.



McLean Art Society - April 2022

Members in Action

From Diane Moran

This is my seashells aggregate that sold at Springhill Rec Center recently.

Almost all the shells & sand were personally collected. My family has lived for 50+ years in Pompano Beach, south Florida. Layers of translucent light body & fluid acrylic paint & glossy medium help provide the realistic visual impact. I enjoy doing similar commissioned pieces of any size!



From Hanna Emrich

Here is My Family as Sunflowers, acrylic, 22 x 26. I wanted to paint all different kinds of sunflowers and found that the available variety made me think of members of my family. Some more colorful than others, some like the young, shy or detached relatives, and some that were close to finishing their bloom., while others were just starting. It is one of our favorites, and hangs in our place in Oregon near all the relatives, who want to know which one they are. But I never tell!

From Renne Alberts

I sold this in a private sale to a family friend. It's a painting of an area in the Nature Reserve at Bethany Beach.





McLean Art Society - April 2022

From Maggie Newman

I just sold these three paintings!



View from a Friend's Condo



Sunset Ride



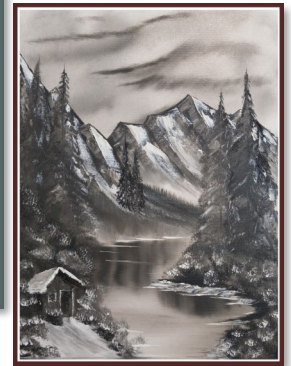
Vietnam Memorial

From Larry Danforth

I listened to Elisabeth Visman's presentation and thought Okay, let's try it. Paint as fast as you can and let yourself go! In his book, *The Third Jesus*, Deepak Chopra discusses meditation as a way of focusing the inner self...sort of like what Elisabeth does. Not prone to such things, I gave it a try as I decided to do my standard, ad hoc painting of mountains, sky and lake but in shades of gray. Start to finish: 125 minutes, but in rushing I put far too much paint on the canvas. So I did it again in shades of burnt umber, but this time put just a dab of burnt umber and a dab of white on the palette and limited the painting to the two dabs. 105 minutes because I wasn't pushing so much paint around the canvas. *Art A Fair* here I come!



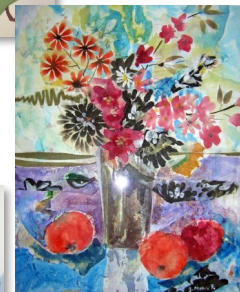
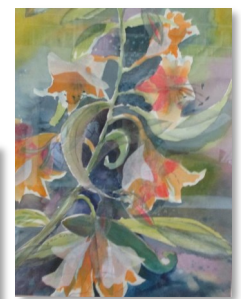
Shades of Gray



Shades of Brown

From Gertrud Mohr-Friedrich

Gertrud has sent in her art work for her personal gallery and will soon be added to our list of artists on the home page. Gertrud is an active member of both the McLean Art Society and the Vienna Arts Society. A few good and competent artists have helped her along the way and encouraged her to dare, to explore, to experiment and to make the best out of mistakes. Gertrud is still learning and trying to meet the challenges of competition and the use of new art materials. She continues to study the old masters and her goal remains to be a better painter. Gertrud holds degrees in French and English, German being her native language. Art and history have always been her passion and she also loves to travel.





McLean Art Society - April 2022

From Jane Podesta

I have two photos in galleries and I sold five huge photos to my alma mater, the Walter Cronkite School for Journalism and Mass Communications at ASU.

"The Birds" is in the Art League's Screen Dream Theme Art Show in April at the Torpedo Factory in Alexandria. "Into The Big Empty" is among the photos requested for the ASU dean's office. "Rock Creek" is in the all-member show at the Falls Church Arts gallery show.



Rock Creek



The Birds

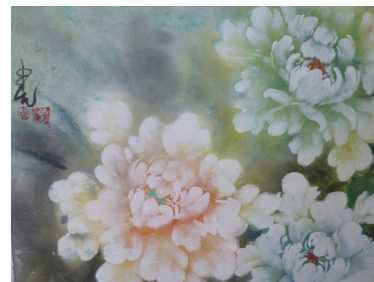


Into the Big Empty

From Carol Waite

"Bringing Nature Indoors" is the title of my show at the Goodwin House Bailey's Crossroads, 3440 S. Jefferson St., Falls Church. The show is up with 45+ of my Sumi-e paintings, watercolor and ink on rice paper. Visitors are welcome anytime and the show will be up until mid-June.

"Splendor of Spring: Paintings and Calligraphy" is on view at Lorton's Workhouse Arts Center, 9518 Workhouse Way. Four of my paintings are included in the show of 35 works and will be up until May 30. You can visit virtually at [Work House Arts](http://WorkHouseArts.com).





McLean Art Society – April 2022

Our Board

MAS Executive Board

2021-2022

President – Anna Katalina

Vice President – Sandra Hill

Secretary – Christy Kill

Treasurer – Judy Landry

Chairs

Directory – Hanna Emrich and Lori Lisiecki

Email distribution – Lori Lisiecki

Facebook – Anna Karalkina

Hospitality – Hanna Emrich

Instagram – Christy Kill

Membership – Lori Lisiecki

Name Tags – Diane Moran

Newsletter – Larry Danforth

Parliamentarian – Mary Jeanne Martz

Patron's List – Gerda Lane

Program Coordinator – Dorothy Hassan

Publicity – Renee Alberts

State Agent – Ginger Sanaie

Venues

Oak Marr – Margaret Raymond

Spring Hill – Carol Higgs and Carol Milton

'Westover Library – Bill and Betty Dunn

Dolley Madison Libraray – Olga Martin

MPA/TD Bank – Hanna Emrich and Vicky Wilken

Volunteer Coordinator – Jane Coonce

Webmaster – Larry Danforth

At Large Members – Ginnie Luster and Vicky Wilken

INSTAGRAM PAGE:

<https://www.instagram.com/mcleanartsociety/>

You should be able to view it from any browser, but to see our page fully, you may need to have an Instagram account. If so, just go to www.instagram.com to sign up.

Here is a link to a YouTube video that is very helpful in getting started:

<https://m.youtube.com/watch?v=no55N1sHjT8>

FACEBOOK PAGE:

The page is called McLean Art Society.

Click [HERE](#) to view the page.

To sign up with a new account, go to facebook.com and click on **Create New Account**. Enter your name, email or mobile phone number, password, date of birth and gender. Then click on **Sign Up**. To finish creating your account, you need to confirm your email or mobile phone number.

The Mclean Art Society Palette

The Palette newsletter is a monthly production of the McLean Art Society and while intended for the active members and sponsors of the Society, distribution is unrestricted and unrecorded. All stories and artwork are printed with permission of the artist. All content is ©Copyright protected by the McLean Art Society and individual works are ©Copyright protected by the artist. No reproduction of any artwork is permitted with the express permission of both the McLean Art Society and the artist that created the work. Your cooperation is appreciated.